

Land Use 2016 - Report Card on the Land-use Framework

Crystal Damer
Executive Director
Land Use Secretariat

May 5, 2016



Why Land Use Planning?

A need to plan better for Alberta's future

Albertans want to ensure the province remains strong and sustainable now and for generations to come. Through extensive consultations, Albertans voiced their desire for an Alberta with:

Strong communities and a plan for managing urban growth



Clean air and water



A diversified and value-added economy



Ample opportunities for recreation and enjoyment of Alberta's natural beauty



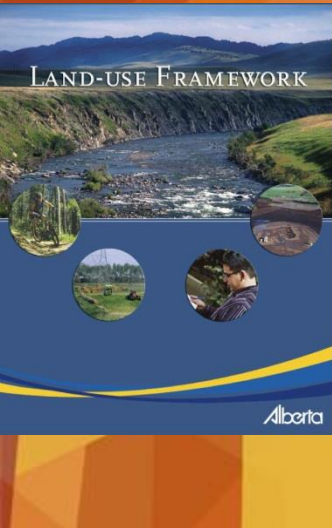
Healthy biodiversity



A transparent and consultative approach to planning that is inclusive of all Albertans



Land-use Framework and the *Alberta Land Stewardship Act*



- In 2008, the Land-use Framework ushered in a new approach to managing lands and natural resources to achieve Alberta's long-term economic, environmental and social outcomes.

Vision: Albertans work together to respect and care for the land as the foundation of our economic, environmental and social well-being

- In 2009, ALSA was proclaimed.



Province of Alberta

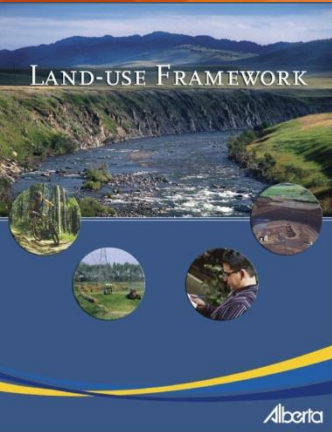
ALBERTA LAND STEWARDSHIP ACT

Statutes of Alberta, 2009
Chapter A-26.8
Current as of December 11, 2013

Office Consolidation

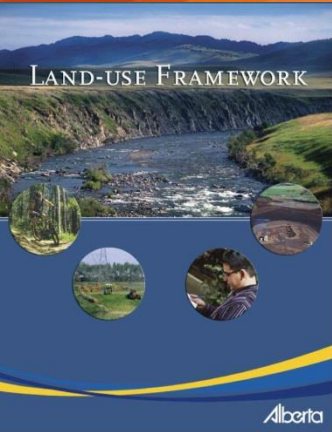
© Her Majesty the Queen in Right of Alberta
Alberta Queen's Printer
777 Queen Street West
Edmonton, AB T6P 0S6
Phone: 780-427-4411
Fax: 780-427-4400
E-mail: alga@alberta.ca
http://www.alberta.ca

Land-use Framework - today



- Alberta's economic growth and growing population are the main drivers of change
- Today, regional planning is part of a larger integrated and coordinated resource management approach.
- The Integrated Resource Management System takes a holistic view of managing our natural assets and resources
 - Strategic Intent through provincial legislation and policies
 - Regional Plans which support a cumulative effects management approach to resource management
 - Policy assurance is a commitment to environmental management and public safety
 - Monitoring, Evaluating and Reporting to track progress and inform management action

Land-use Framework - today



- Regional plans are the key to implementing the framework
 - They are developed following the guiding principles
Sustainable, Accountable and Responsible, Land Stewardship Ethic, Collaboration and Transparent, Responsive, Fair and Timely, Respectful of Private Property, Respectful of Indigenous Communities
 - They incorporate the LUF strategies and policy initiatives.

Strategy 1 - Regional Planning is

- Doing better for the environment
 - Establishes targets/trigger and limits for air, water and biodiversity; and establishes conservation areas to protect critical landscapes.
- Supporting economic diversity and innovation
 - Recognizes the value and importance of diversification and innovation in maintaining and sustaining a strong economy.
- Addressing competing land uses
 - Allows for land-use trade-off discussions to occur and in a way that aligns with the priorities of Albertans.

Strategy 1 - Regional Planning is

- Supporting municipal growth
 - Acknowledges the role of municipalities, and supports infrastructure planning.
- Respecting private property rights
 - Does not take away private property rights.
- Engaging Albertans in land-use planning and building relationships
 - Follows a comprehensive, structured and transparent mechanism for meaningful consultation and engagement with the public, stakeholders, partners and indigenous people.

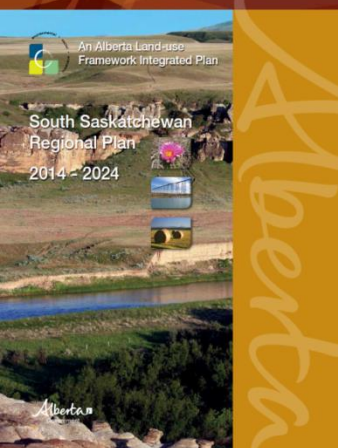
Approved land-use plans



Lower Athabasca Regional Plan:
Effective
September 2012



South Saskatchewan Regional Plan:
Effective
September 2014



Strategy 2 - Land Use Secretariat

- ALSA establishes the Land Use Secretariat to be part of the public service but not part of a government department.
- Leads the development of regional plans in conjunction with departments with an interest in land-use and in consultation with the Regional Advisory Councils.
- Leads consultation on regional development.

Strategy 3 - Cumulative Effects Management

- Environmental Management Frameworks manage the long-term effects of human development on the environment at the regional level
 - Indicators are chosen to help determine if we are meeting our objectives
 - Threshold values, triggers, limits are set with progressive action required based on conditions found in the environment
- In each region, we will have frameworks to support:
 - Air Quality
 - Water Quality
 - Water Quantity
 - Biodiversity
 - Linear footprint plans, access management plans

Environmental Management Frameworks

- Key approach to managing the long-term cumulative effects of development on the environment at a regional level

Lower Athabasca	South Saskatchewan	North Saskatchewan (in development)
Air Quality	Air Quality	Air Quality
Surface Water Quality	Biodiversity	Biodiversity
Surface Water Quantity	Surface Water Quality	Groundwater
Groundwater		Surface Water Quality
Biodiversity		

Strategy 4 - Conservation and Stewardship

- Regulatory framework for conservation and stewardship tools was established through ALSA.
- Enables the development and implementation of conservation easements, conservation directives, conservation offsets and the transfer of development credits.

Strategy 5 - Efficient Use of Land

- Provides land managers and land users with a set of broad principles and tools to help reduce human footprint.
- Integrated Land Management Tools
Compendium supports efficient use of land objectives on public lands (2012).
- Efficient Use of Land Implementation Tools
Compendium supports efficient use of land objectives on private lands (2014).

Strategy 6 - Monitoring and Reporting

- The Land-use Framework is based on a system of continuous improvement that allows the regional plans to be adjusted over time.
- Tools for continuous improvement include regional plan amendments, progress reports, five year audits and 10 year reviews.

Strategy 7 - Inclusion of Indigenous Peoples

- Government completes extensive consultation with Indigenous communities during the development and implementation of regional plans.
- One-on-one meetings, workshops, tables and forums are all being explored to enhance consultation and respect each community's cultural protocol.

What we have learned so far

- Regional planning development, consultation and implementation is a thorough process that takes time and a great deal of collaboration between all Albertans.
- We need to enhance the way we consult and engage with Indigenous communities.
- The approved regional plans are our templates moving forward and we will continue to improve all aspects of development and implementation.