

Re-imagine. Plan. Build.

Edmonton **Metropolitan** **Region** Growth Plan

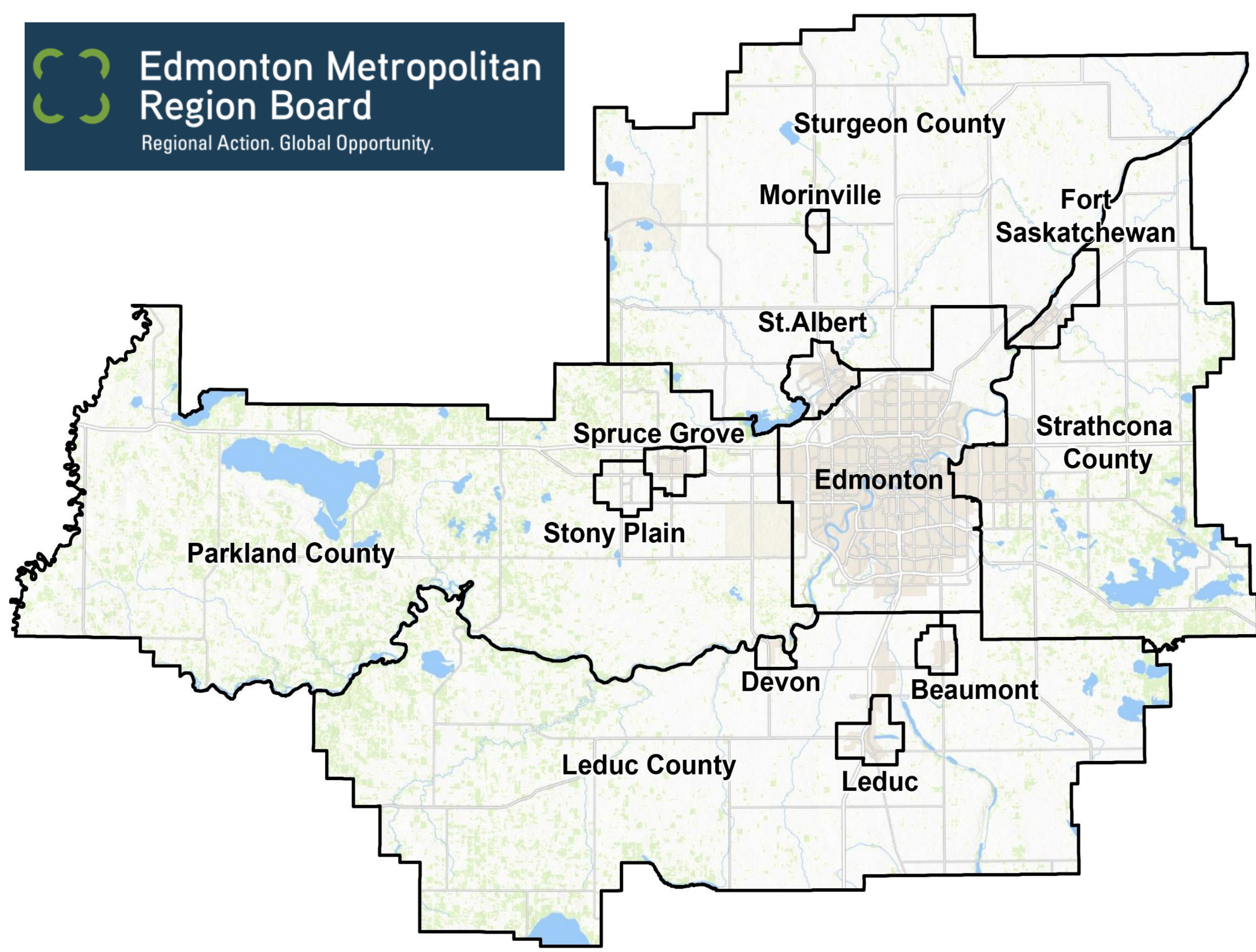
Sharon Shuya, M.B.A.
Manager Regional Projects
May 30, 2018





Edmonton Metropolitan Region Board

Regional Action. Global Opportunity.



Re-imagine. Plan. Build.

Edmonton Metropolitan Region Growth Plan

Effective October 26, 2017



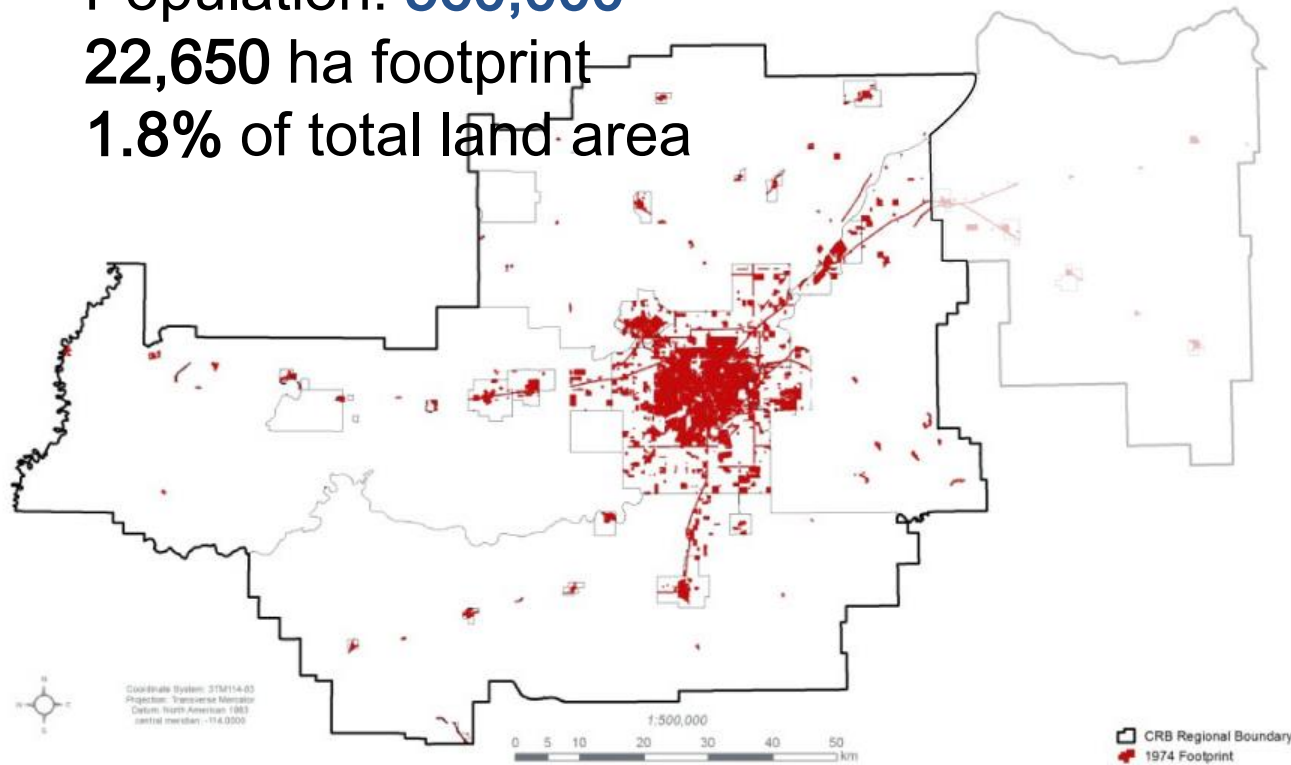
40 Years of Prosperity

1974

Population: **560,000**

22,650 ha footprint

1.8% of total land area

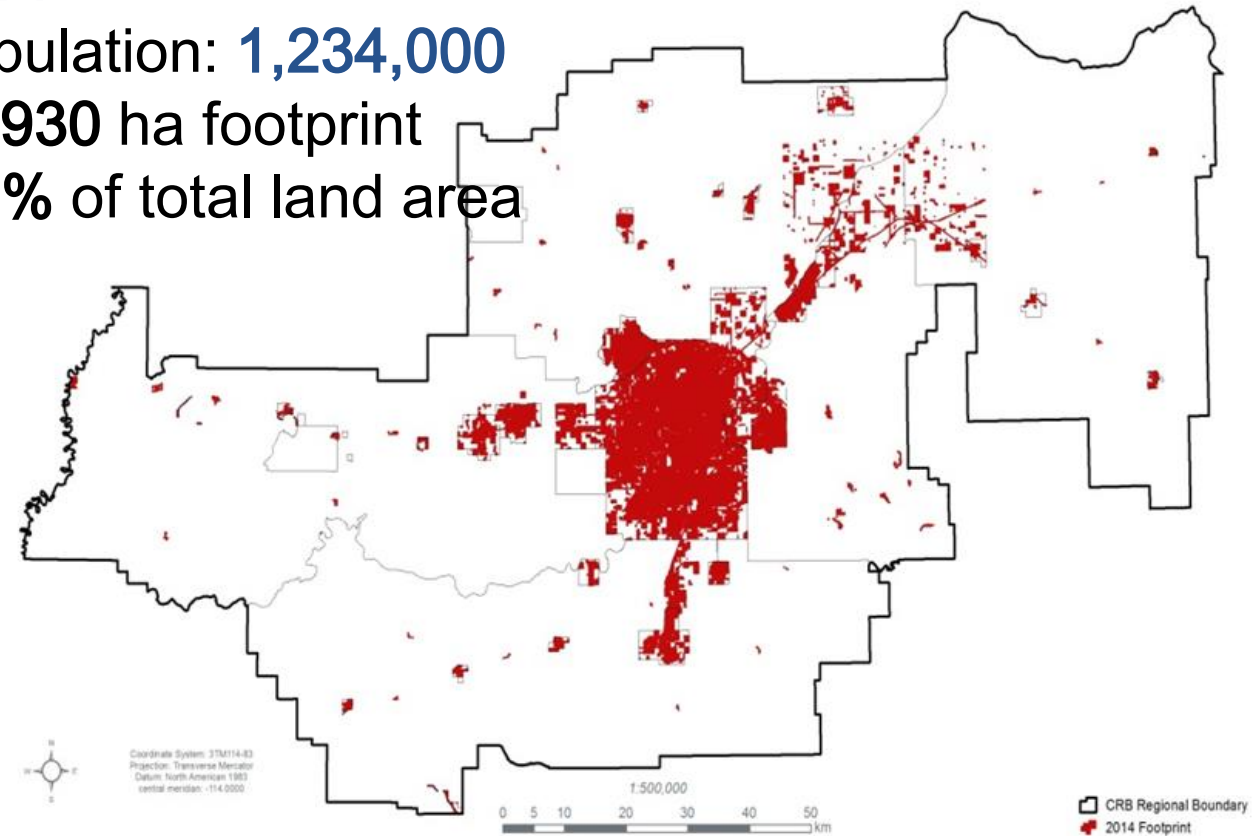


2014

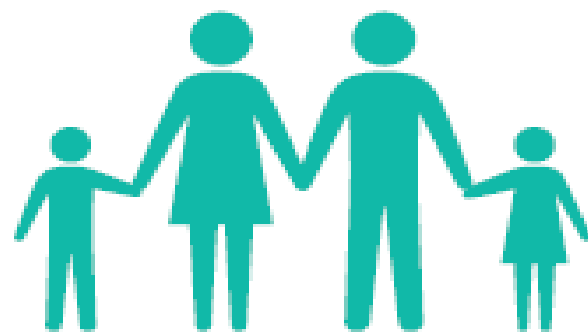
Population: **1,234,000**

69,930 ha footprint

5.6% of total land area

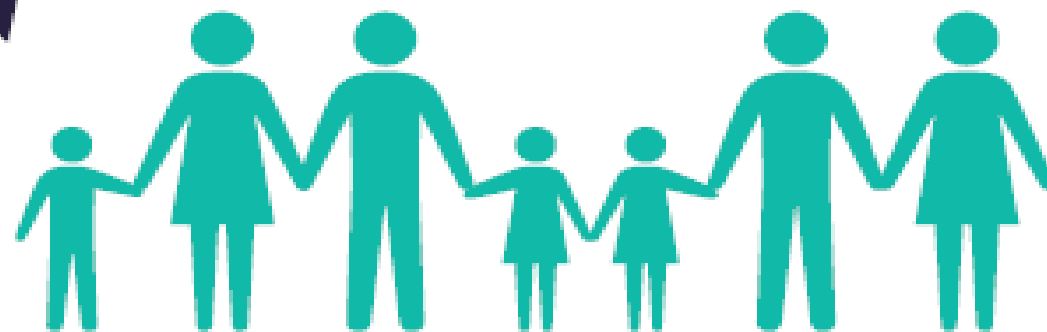


2014
1,234,100



Employment
725,545

2044
2,235,100

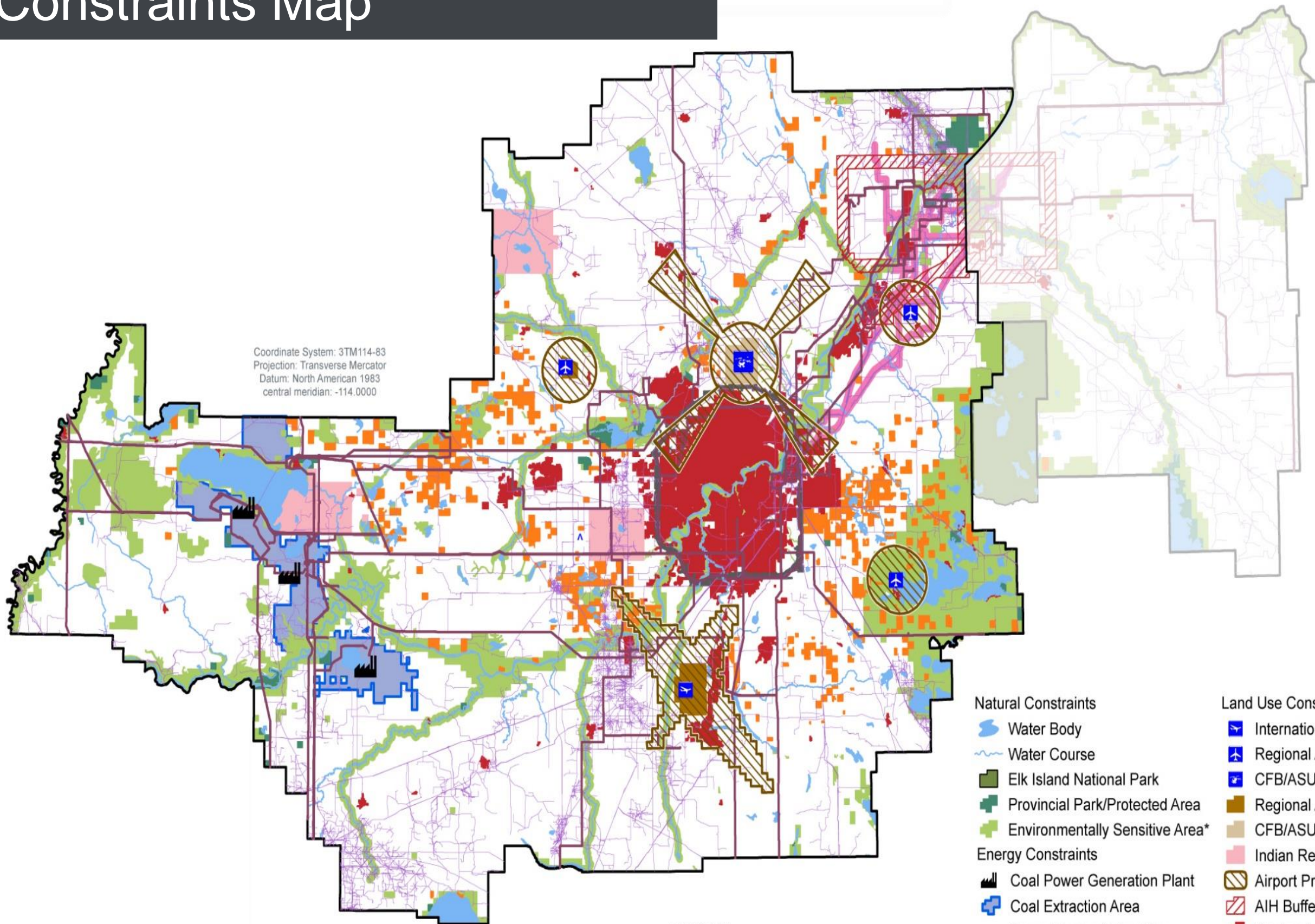


Employment
1,197,345

Constraints Map



Coordinate System: 3TM114-83
Projection: Transverse Mercator
Datum: North American 1983
central meridian: -114.0000



1:500,000

0 5 10 20 30 40 50 km

Natural Constraints

- Water Body
- Water Course
- Elk Island National Park
- Provincial Park/Protected Area
- Environmentally Sensitive Area*

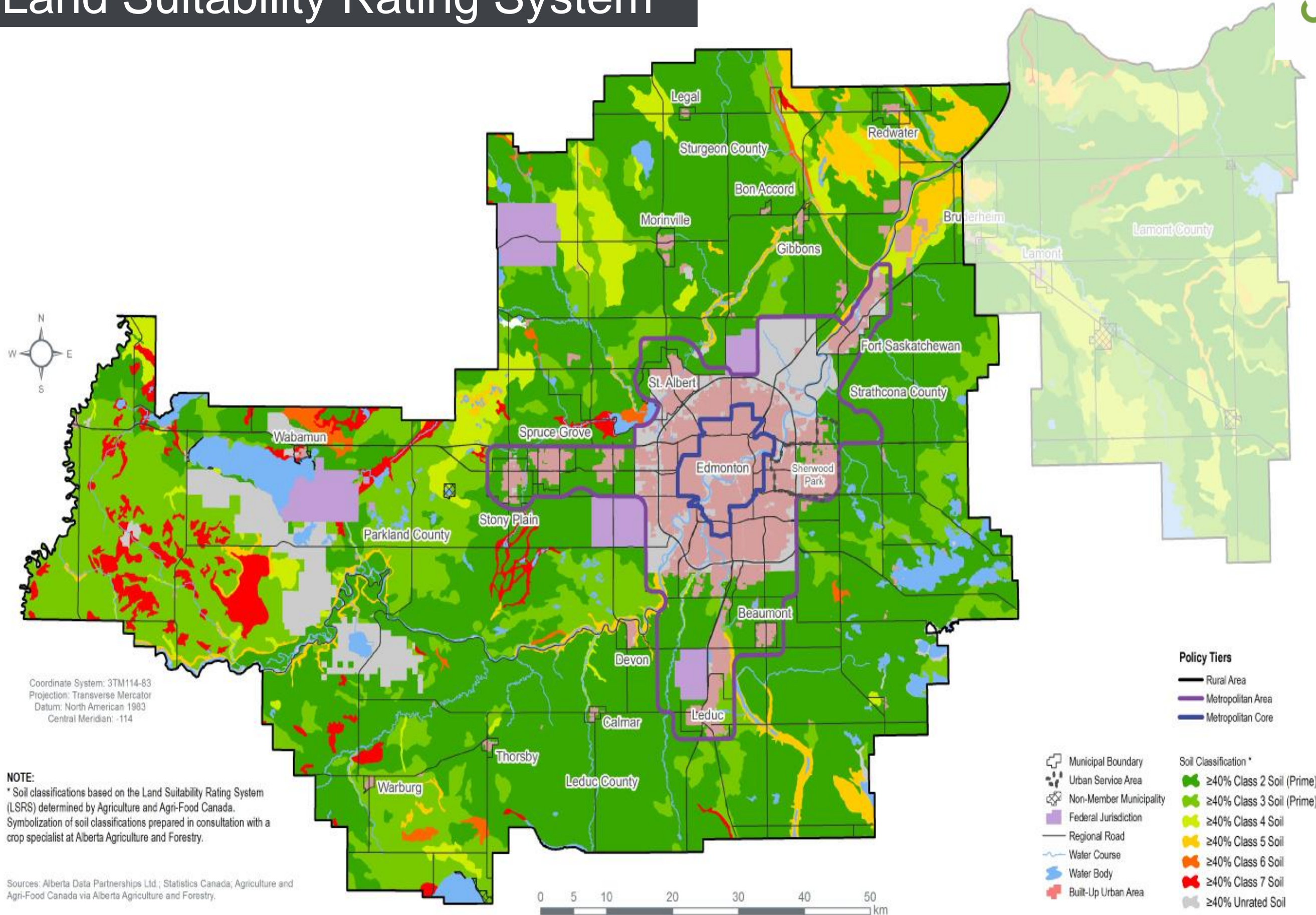
Energy Constraints

- Coal Power Generation Plant
- Coal Extraction Area
- Power Transmission Line
- Pipeline
- Major Pipeline Corridor

Land Use Constraints

- International Airport
- Regional Airport
- CFB/ASU Heliport
- Regional Airports Land
- CFB/ASU Edmonton
- Indian Reserve
- Airport Protection Area**
- AIH Buffer
- Regional Development***
- Country Residential***
- Transportation Utility Corridor

Land Suitability Rating System



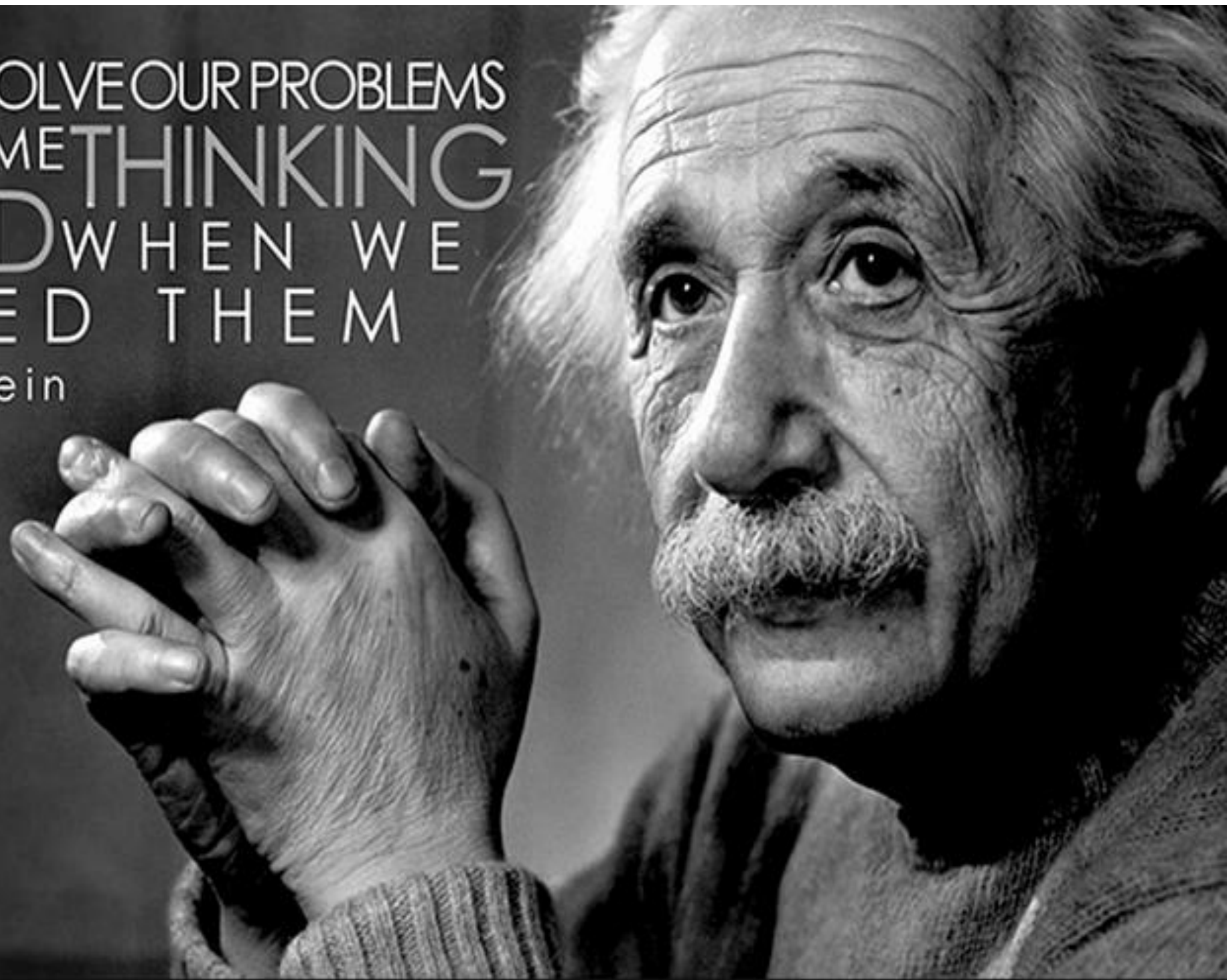
Responsible Growth



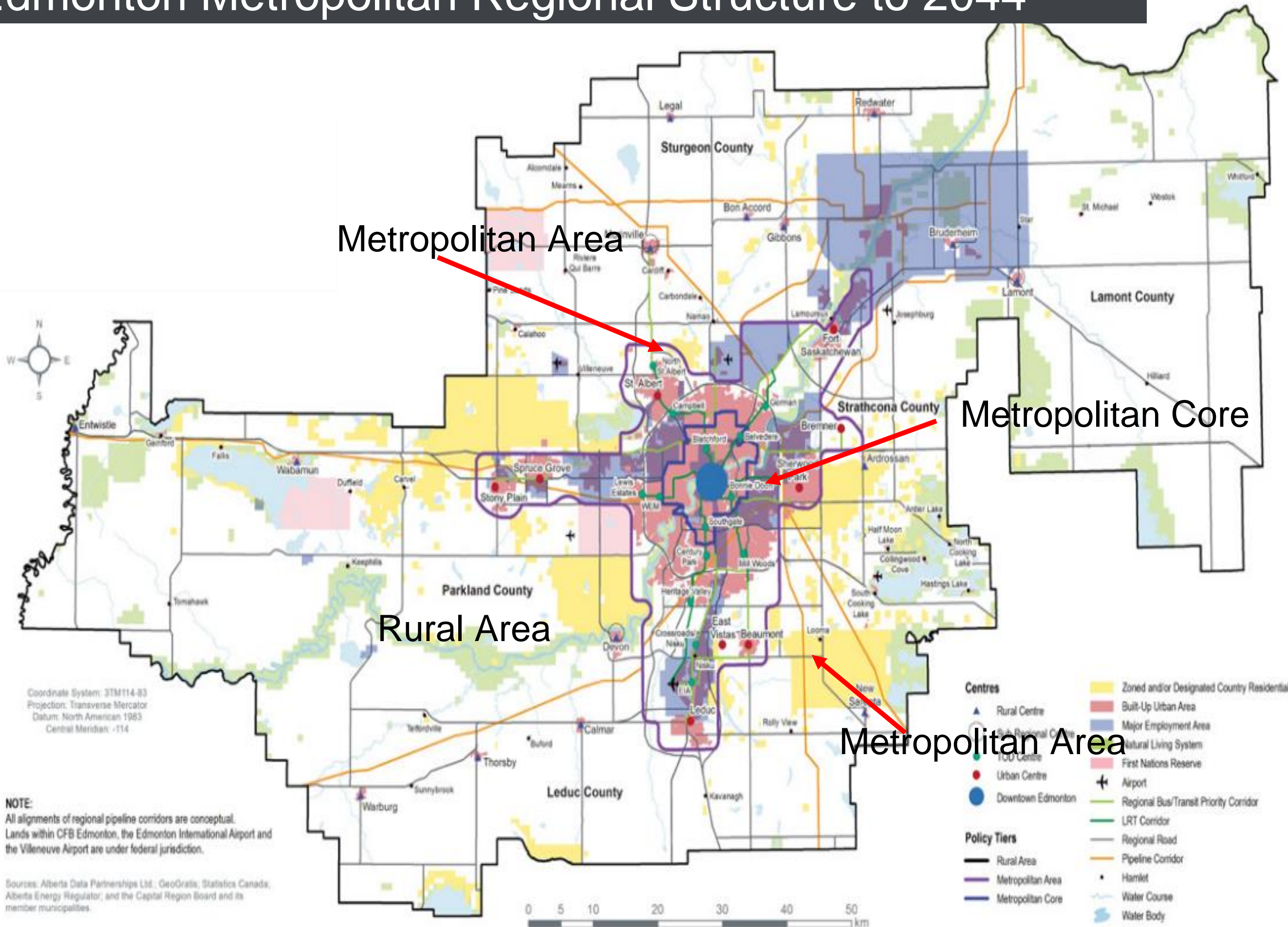
Strathcona County

WE CANNOT SOLVE OUR PROBLEMS
WITH THE SAME THINKING
WE USED WHEN WE
CREATED THEM

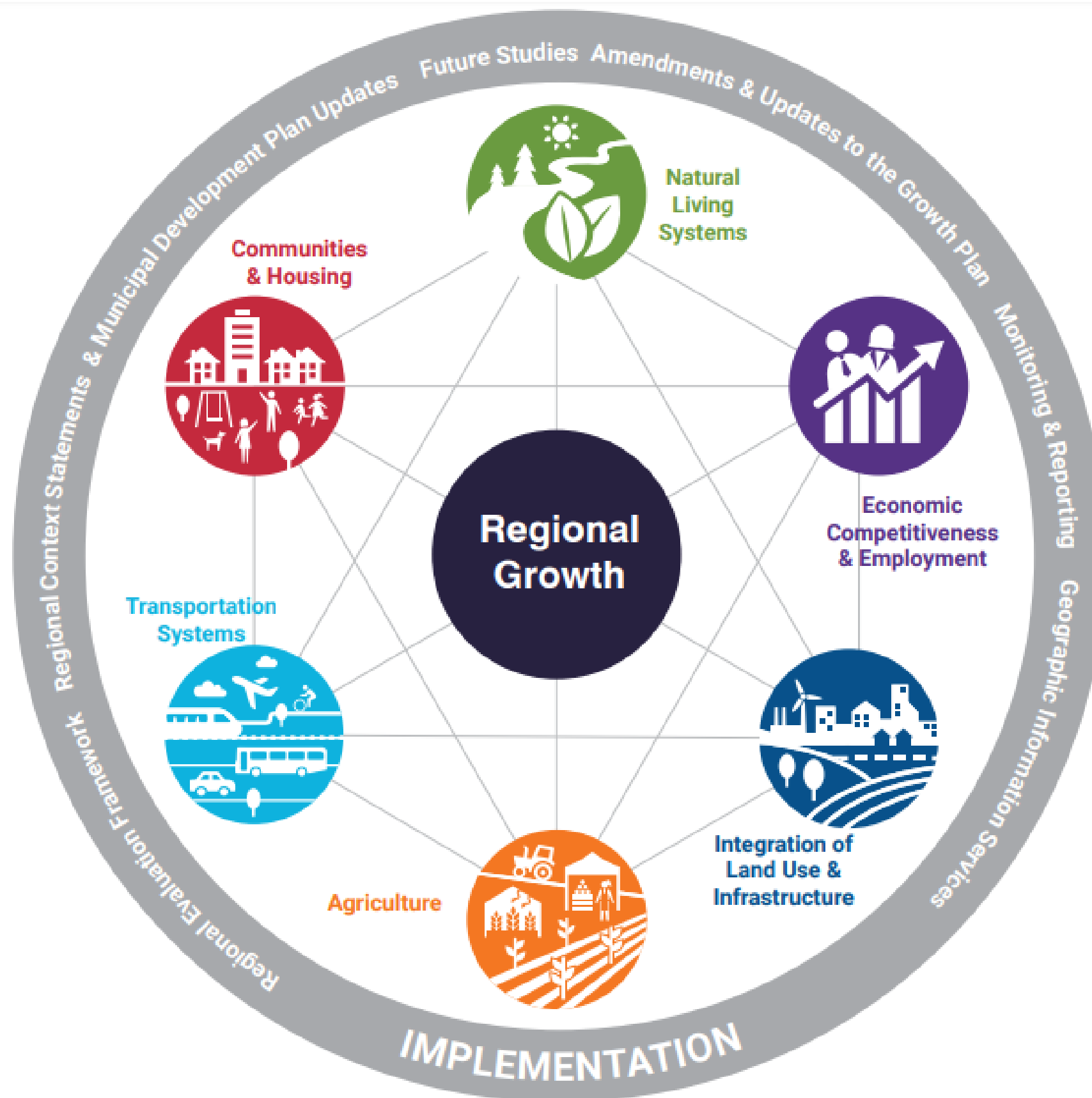
- Albert Einstein



Edmonton Metropolitan Regional Structure to 2044



Regional Policy Areas





Agriculture

PRINCIPLE

Ensure the wise management of prime agricultural resources. In the context of metropolitan growth, we will ensure the wise management of prime agricultural resources to continue a thriving agricultural sector.

OBJECTIVES

- 6.1 Identify and conserve an adequate supply of prime agricultural lands to provide a secure local food source for future generations
- 6.2 Minimize the fragmentation and conversion of prime agricultural lands for non-agricultural uses
- 6.3 Promote diversification and value-added agriculture production and plan infrastructure to support the agricultural sector and regional food system



Policy Direction ... Where to grow



Spruce Grove/Stony Plain

Policy Direction ... How to grow



Edmonton, 23rd Avenue

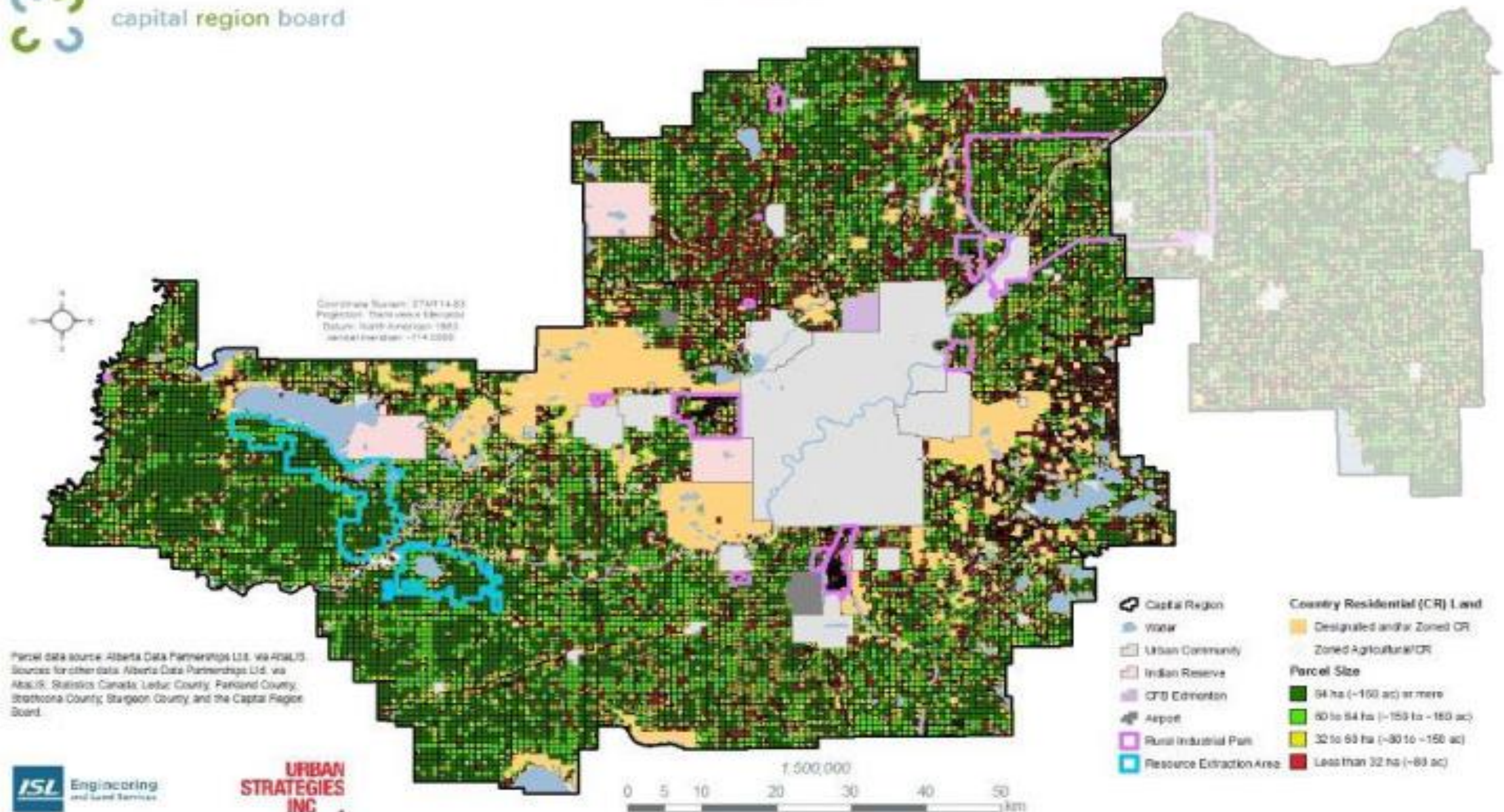
Informing Future Work



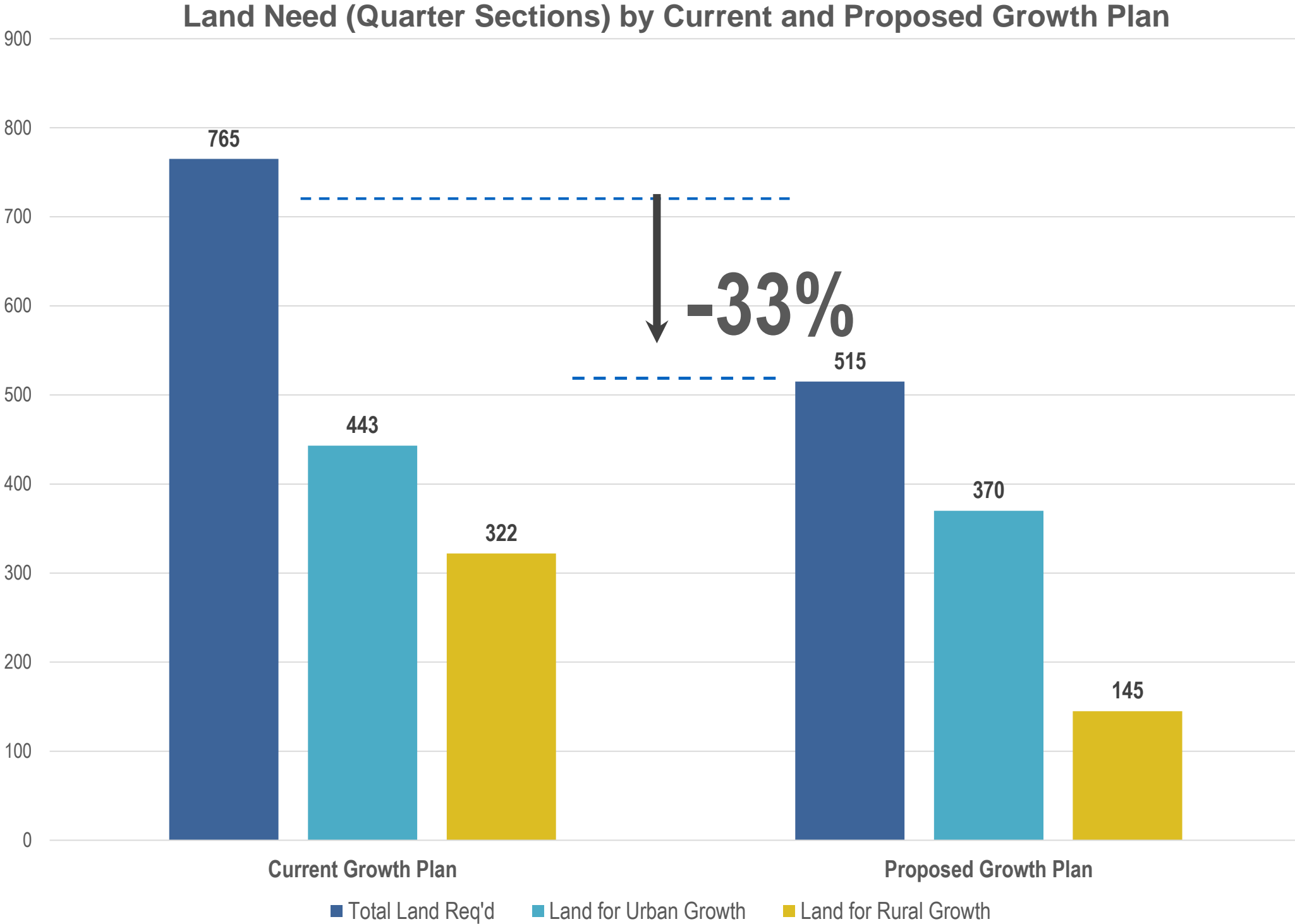
capital region board

Parcel Sizes Beyond Urban Communities and Country Residential Areas

(v.1 April 12, 2016)



Outcome of the Plan




Regional Agriculture Master Plan

"Arguably the act of 'preserving' agricultural land runs counter to the prevailing ethos underlying the development of Western Canadian urban regions for the past 150 years."

Jerry Bouma, B.Sc., M. Sc.
Agriculture Working Paper, January 2016.



Regional Agriculture Master Plan - Project Purpose

A photograph of four people standing in a field of green plants with small white flowers. On the left, a woman with blonde hair in a purple top and a man with grey hair in a light grey shirt. In the center, a young man with glasses in a plaid shirt. On the right, a young man in a dark polo shirt. In the background, there are long metal structures, possibly irrigation equipment, under a cloudy sky.

To provide the region's decision-makers with a land use framework and tools to make decisions consistent with the principles and objectives of the Growth Plan.

To provide certainty and flexibility for the existing agricultural sector and position the region to capitalize on future agricultural opportunities for the growth and sustainability of the sector for future generations.

Land Evaluation and Site Assessment Tool

LE	Land Evaluation	Soil based factors (such as LSRS ratings, to assess the physical capability of the land to support viable agricultural production
SA 1	Site Assessment	Other agricultural factors measuring limitations on agricultural productivity such as the size of parcel; current level of farm sales; net income generated; farm practices such as soil and water conservation
SA 2	Site Assessment	Factors measuring development pressure or land conversion such as proximity of residential, commercial and industry zoning, proximity of agricultural or rural zoning
SA 3	Site Assessment	Factors measuring other public values such as historic or scenic values; and environmental considerations.

Current Policy





"Addressing agriculture, as a Region, means we are serious about investing in and growing this industry, sustaining our land and way of life so we can continue to contribute meaningfully to the world. It's absolutely the right thing to do."



Councillor John Schoney
Leduc County